

Mouse SPLASH[®] LIPIDOMIX[®] Mass Spec Internal Standard
Product Number 330710X-1EA

Page 1 of 2

Physical form 1:1 Dichloromethane:Methanol Solution (1ml per vial)
Storage -20° C (Freezer)
Manufacture date October 10, 2017
Expiration date One year from date of receipt
Lot number 330710X-1ML-011
MLOT Number 6454XAA011

Compound Name	Molecular Weight	Exact Mass	Chemical Formula	Conc. (µg/mL)*	Conc. µM*
15:0-18:1(d7) PC	753.11	752.61	C ₄₁ H ₇₃ D ₇ NO ₈ P	75.3	100
15:0-18:1(d7) PE	711.03	710.56	C ₃₈ H ₆₇ D ₇ NO ₈ P	5.0	7
15:0-18:1(d7) PS (Na Salt)	777.02	776.53	C ₃₉ H ₆₆ D ₇ NNaO ₁₀ P	15.5	20
15:0-18:1(d7) PG (Na Salt)	764.02	763.54	C ₃₉ H ₆₇ D ₇ NaO ₁₀ P	3.8	5
15:0-18:1(d7) PI (NH ₄ Salt)	847.13	846.60	C ₄₂ H ₇₅ D ₇ NO ₁₃ P	16.9	20
15:0-18:1(d7) PA (Na Salt)	689.94	689.50	C ₃₆ H ₆₁ D ₇ NaO ₈ P	6.9	10
18:1(d7) Lyso PC	528.72	528.39	C ₂₆ H ₄₅ D ₇ NO ₇ P	23.8	45
18:1(d7) Lyso PE	486.64	486.35	C ₂₃ H ₃₉ D ₇ NO ₇ P	1.0	2
18:1(d7) Chol Ester	658.16	657.64	C ₄₅ H ₇₁ D ₇ O ₂	164.5	250
C18(Plasm)-18:1(d9) PC	781.19	780.67	C ₄₄ H ₇₇ D ₉ NO ₇ P	15.6	20
15:0-18:1(d7) DAG	587.98	587.55	C ₃₆ H ₆₁ D ₇ O ₅	8.8	15
15:0-18:1(d7)-15:0 TAG	812.37	811.77	C ₅₁ H ₈₉ D ₇ O ₆	28.4	35
d18:1-18:1(d9) SM	738.12	737.64	C ₄₁ H ₇₂ D ₉ N ₂ O ₆ P	14.8	20
C18(Plasm)-18:1(d9) PE	739.11	738.62	C ₄₁ H ₇₁ D ₉ NO ₇ P	3.7	5

*Concentrations are based on the isotopic purity of each individual compound

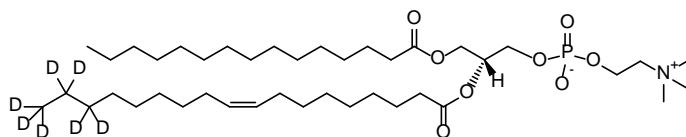
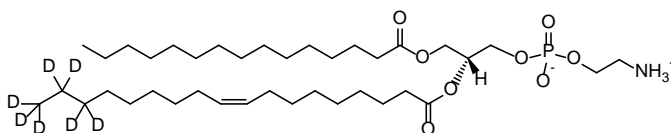
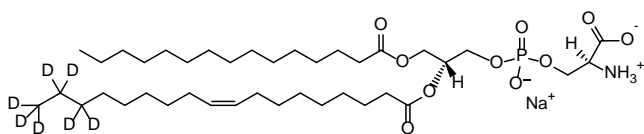
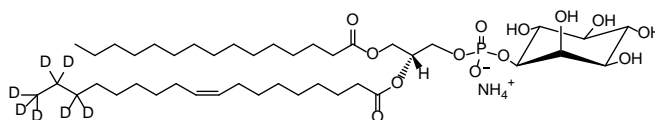
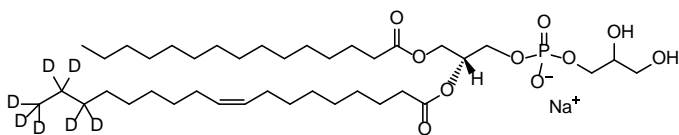
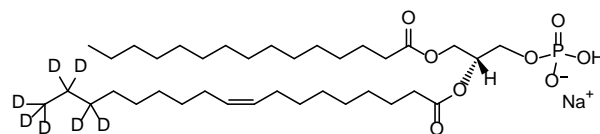
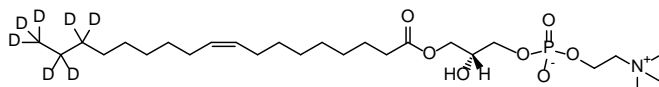
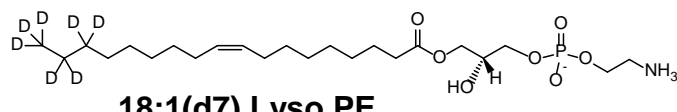
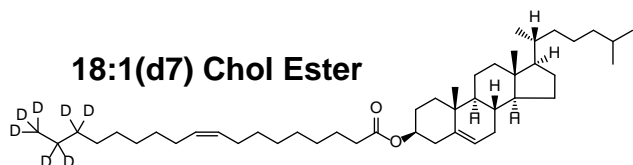
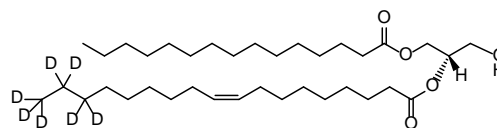
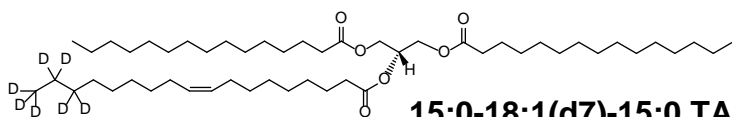
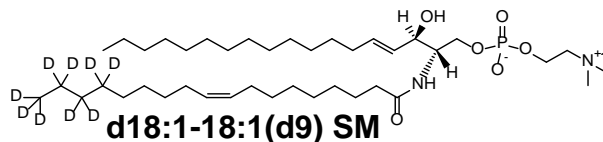
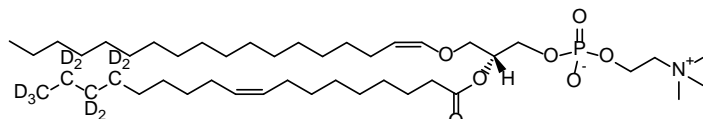
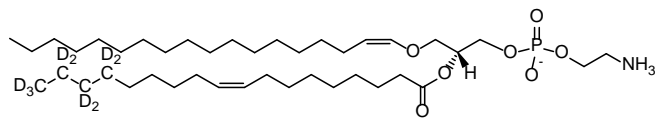
Approved by:



Quality Control Representative

Date:

April 9, 2018

Mouse SPLASH[®] LIPIDOMIX[®] Mass Spec Internal Standard
Product Number 330710X-1EA
Page 2 of 2

15:0-18:1(d7) PC

15:0-18:1(d7) PE

15:0-18:1(d7) PS

15:0-18:1(d7) PI

15:0-18:1(d7) PG

15:0-18:1(d7) PA

18:1(d7) Lyso PC

18:1(d7) Lyso PE

18:1(d7) Chol Ester

15:0-18:1(d7) DAG

15:0-18:1(d7)-15:0 TAG

d18:1-18:1(d9) SM

C18(Plasm)-18:1(d9) PC

C18(Plasm)-18:1(d9) PE